



Wood



CREATE BEYOND CONVENTION

FILIOFOCUS

1600 CENTRAL

Installation and User Manual

Tested by OMNI-Test Laboratories, Inc. and approved in accordance with:

UL 737-2011 and ULC S627-23

US EPA EXEMPT

Report number : 0304WF010S

This document was provided with your Focus fireplace.

PLEASE READ AND RETAIN THIS MANUAL



CONTENTS

INTRODUCTION	04
SPECIFICATIONS	05
■ DETAILED PLAN	05
■ ROOF OUTLET REQUIREMENTS	06
■ CHIMNEY REQUIREMENTS	06
■ SUPPORTING STRUCTURE RULES	06
■ CONNECTORS	07
■ FRESH AIR INLET DEVICE	07
■ FLOOR CLEARANCE REQUIREMENTS	08
■ WALL CLEARANCE REQUIREMENTS	09
■ MATERIALS, PARTS, AND TOOLS INCLUDED FOR INSTALLATION	10
INSTALLATION	11
■ ASSEMBLY OF THE ADJUSTABLE SUSPENSION PLATE	11
■ FIREPLACE INSTALLATION	12
USE	15
■ HANDLING FLAMMABLE PRODUCTS	15
■ ANDIRON	15
■ ASHES	15
■ FUEL	15
■ BEFORE YOUR FIRST FIRE	16
■ LIGHTING AND MAINTAINING YOUR FIRE	16
■ PROTECTIVE GLOVES	17
■ OPERATING AND USING THE BLANKING CAP	17
MAINTENANCE	18
■ ASH REMOVAL	18
■ CREOSOTE FORMATION	18
■ CHIMNEY SWEEPING	18
■ FIRE GLASSES CLEANING	18
■ SURFACE CLEANING	19
■ SPARE PARTS	19
WARRANTY	19
APPENDIX	20
■ ADJUSTABLE SUSPENSION PLATE	20
■ GAS ADAPTATION	22

INTRODUCTION

Please read this entire manual before proceeding with installation and use. Failure to follow the instructions in this manual may result in serious property damage and bodily injury, including fatal injury. Be sure to contact local authorities for additional information on regulations in your area. Failure to comply with this manual will automatically void the Focus warranty.

Consult with competent authorities (e.g., municipal building services, fire departments, fire prevention offices) before installation to determine if a permit is required.

NOTE :

This fireplace has been certified for use with wood or with a gas burner compliant with ANSI Z21.60 standard, with a heat output of 65,000 BTU/Hr or less.

All **WARNINGS** and **SAFETY RULES** will appear in highlighted boxes.

Keep this manual in an accessible location for future reference.

Thank you for choosing a Focus fireplace.

Manufactured by:
atelier dominique imbert s.a.s.
34380 Vieux le fort-France
www.focus-creation.com

tested to USA: UL737-2011
CANADA: ULC S627-23

CAUTION: HOT WHILE IN OPERATION
DO NOT TOUCH. KEEP CHILDREN AND
CLOTHING AWAY. CONTACT MAY
CAUSE SKIN BURNS. SEE NAMEPLATE AND
INSTRUCTIONS. KEEP FURNISHINGS AND OTHER
COMBUSTIBLE MATERIALS A CONSIDERABLE
DISTANCE AWAY FROM THIS APPLIANCE.

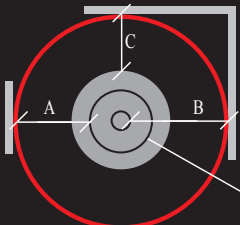
Report Number: 0304WFF0105

LISTED SOLID FUEL FIREPLACE SERIAL NO.
STOVE/MODEL: FILIOFOCUS central version

DATE OF MANUFACTURE:
01 02 03 04 05 06 07 08 09 10 11 12 2005 2006 2007 2008 2009



CLEARANCE TO COMBUSTIBLE SURFACES



A: GLASS TO SURROUNDING WALLS:
USA: 34"
Canada: 42"

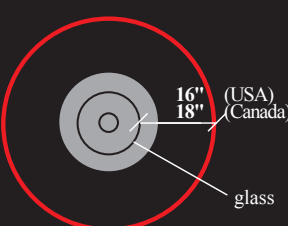
B: CHIMNEY CONNECTOR TO SURROUNDING WALLS:
USA: 52"
Canada: 60"

UNIT TO FLOOR (non combustibile floor throughout): 0"

C: EDGE OF BASE TO NON-COMBUSTIBLE
STRUCTURE: minimum 4"

NOTE: This is to maintain proper airflow around appliance.

FLOOR PROTECTION



Floor protection must be made of non-combustible material or equivalent (R value of 1,8 or greater) extending beneath heater and to front / sides / rear as indicated on the diagram.
In the USA: 16" from glass
In Canada 18" from glass

When hearth is installed on the floor :
Floor must be non-combustible throughout.

CAUTION : AIR INTAKE MANDATORY!
This fireplace requires a ducted supply of combustion air from outdoors (min. 06"). Fresh air intake may ideally be located under the fireplace, or anywhere else in the same room. As a result of fireplace operation, this heater may starve of combustion, ventilation and dilution air other fuel-burning appliances.

Note: the floor protection diameter must be: Ø 59" (USA) and Ø 63" (Canada)

PREVENT HOUSE FIRES:

Install and use only in accordance with manufacturer's installation and operation instructions and local codes. In absence of any local codes, installation must meet minimum requirements of NFPA 221 in USA, in Canada CSA B365. Refer to manufacturer's instructions and local codes for precautions required for passing chimney system through a combustible wall or ceiling. Inspect and clean chimney system frequently in accordance with manufacturer's instructions. Do not connect this unit to a chimney serving another appliance. For use with solid wood fuel only. **OPERATE ONLY WITH DOOR CLOSED.** Must use flue connector, cover disc and connection pieces provided by Focus for installation. refer to owners manual for installation instructions. Chimney must be factory built UL 103HT or masonry. Inspect and clean chimney frequently. Under certain conditions of use, creosote build-up may occur rapidly. Contact local building or fire officials about restrictions and installation inspection in your area. **DO NOT OVERFIRE - IF UNIT OR CHIMNEY CONNETOR GLOWS, YOU ARE OVERFIRING.**

Exempt from EPA Certification under 40CFR60.531

SPECIFICATIONS

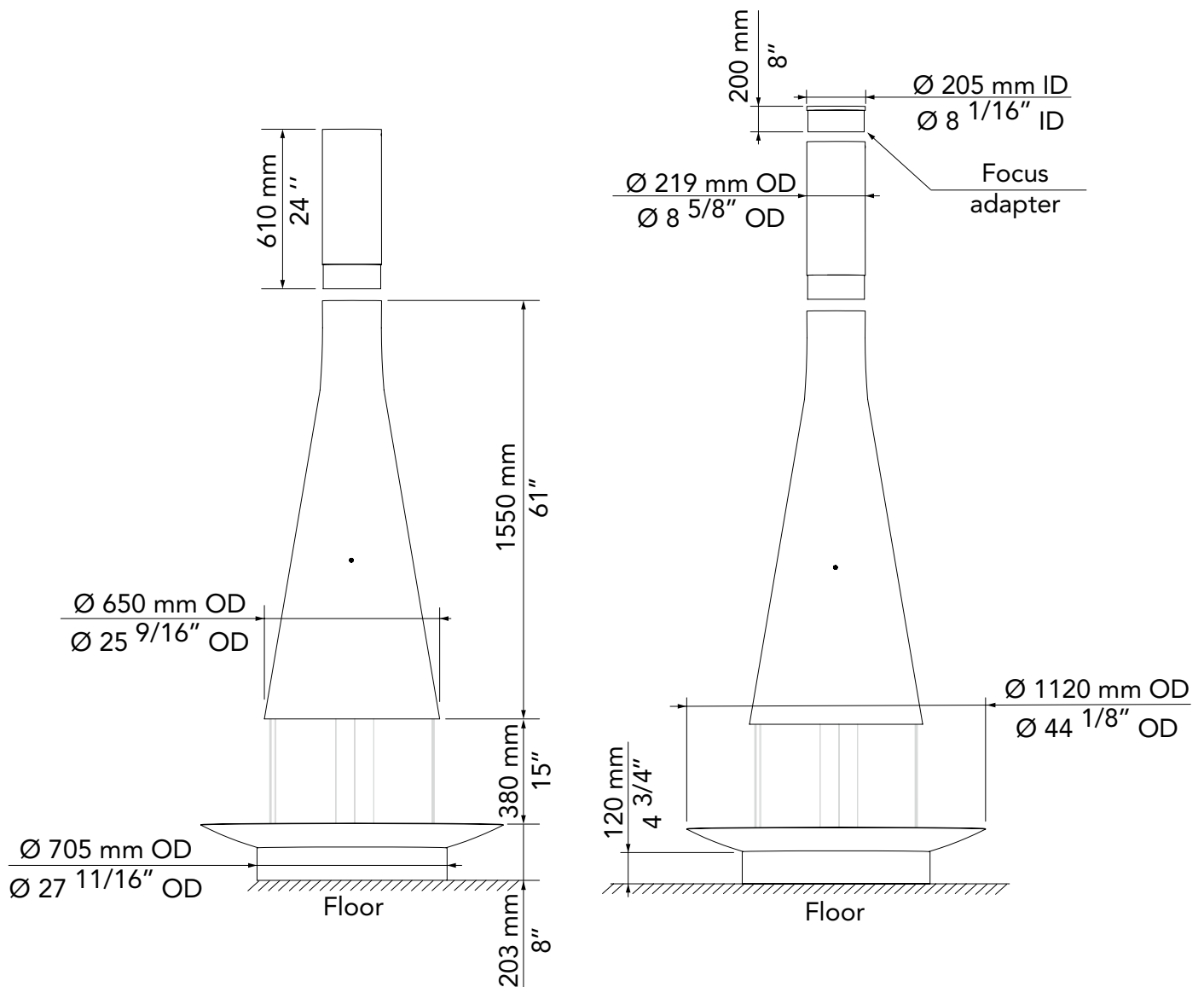
⚠ WARNING :

DO NOT INSTALL IN ANY FIREPLACE. DO NOT INSTALL OUTDOORS.

DO NOT CONNECT OR USE IN CONJUNCTION WITH AIR DISTRIBUTION DUCTS UNLESS THEY ARE SPECIFICALLY APPROVED FOR THIS INSTALLATION.

DO NOT INSTALL IN A TRANSPORTABLE BUILDING.

■ DETAILED PLAN



Hood weight : 76 kg (167 lbs)

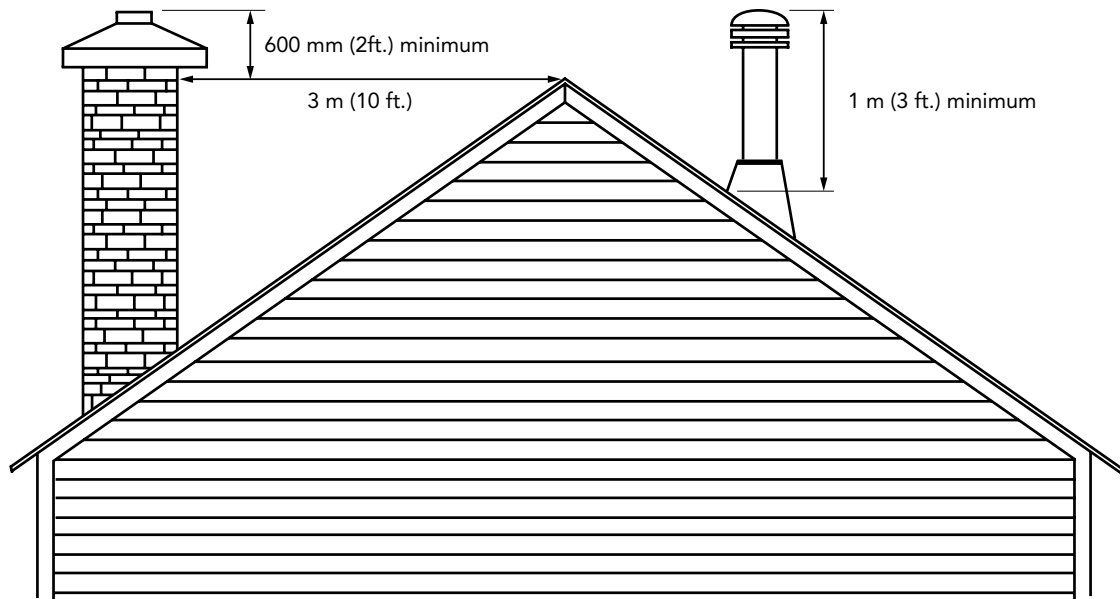
Fire bowl : 60 kg (132 lbs)

Steel flue weight : 16 kg/meter (10,6 lbs/foot)

Suspension plate weight : 66 kg (145 lbs)

SPECIFICATIONS

■ ROOF OUTLET REQUIREMENTS



■ CHIMNEY REQUIREMENTS



WARNING :

DO NOT CONNECT THIS UNIT TO A CHIMNEY FLUE SERVING ANOTHER APPLIANCE.

The total length from the floor to the chimney cap must be at least 5200 mm (17').

If the fireplace is installed less than 5 km (3 miles) from the ocean or with a 30° elbow or more, the total length must be at least 6100 mm (20').

The appliance must be connected to a flue that meets the specifications for HT-type chimneys, as described in the UL 103 / ULC S629 standard.

■ SUPPORTING STRUCTURE RULES



WARNING :

THE SUSPENSION PLATE SUPPORT (ROOF STRUCTURE, SLAB, ETC.) MUST BE SIZED TO ACCOMMODATE BOTH THE STATIC AND DYNAMIC LOADS OF THE FIREPLACE. IT IS YOUR RESPONSIBILITY TO CONSULT AN ENGINEER OR ARCHITECT TO PERFORM THESE CALCULATIONS.

SPECIFICATIONS

■ CONNECTORS

All connectors, including the Focus steel flue, the Focus universal adapter (200 mm / 8"), and the finishing collar provided by the chimney manufacturer with a single-wall connection, are categorized as non-insulated chimney components.

To avoid thermal traps, it is essential that the chimney connector does not pass through an attic, roof space, closet, or any concealed area that could act as a heat trap, including floors or ceilings.

In cases where passing through an attic, roof framing, floor, or ceiling is unavoidable, it must be done using an insulated chimney.

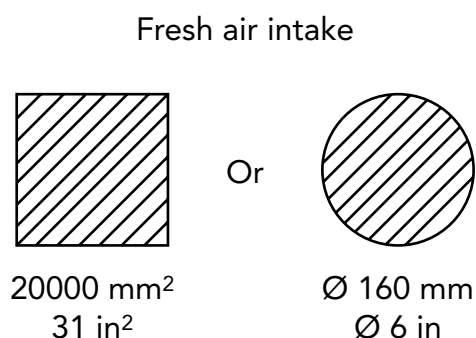
Furthermore, strict adherence to the "safety distances from combustible materials" outlined on page 8 is essential.

WARNING :

PASSING THROUGH A WALL OR COMBUSTIBLE CONSTRUCTION IS NOT SUITABLE FOR THIS FIREPLACE.

■ FRESH AIR INLET DEVICE

For optimal performance, Focus recommends installing a fresh air intake in the room, ideally positioned beneath the fireplace. We suggest using the **Deflect-O A0684 semi-rigid aluminum duct**. The minimum size for the fresh air inlet is:

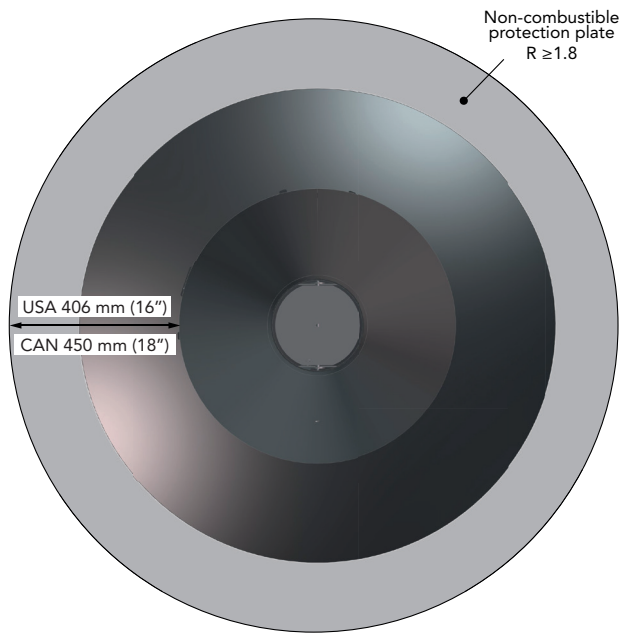
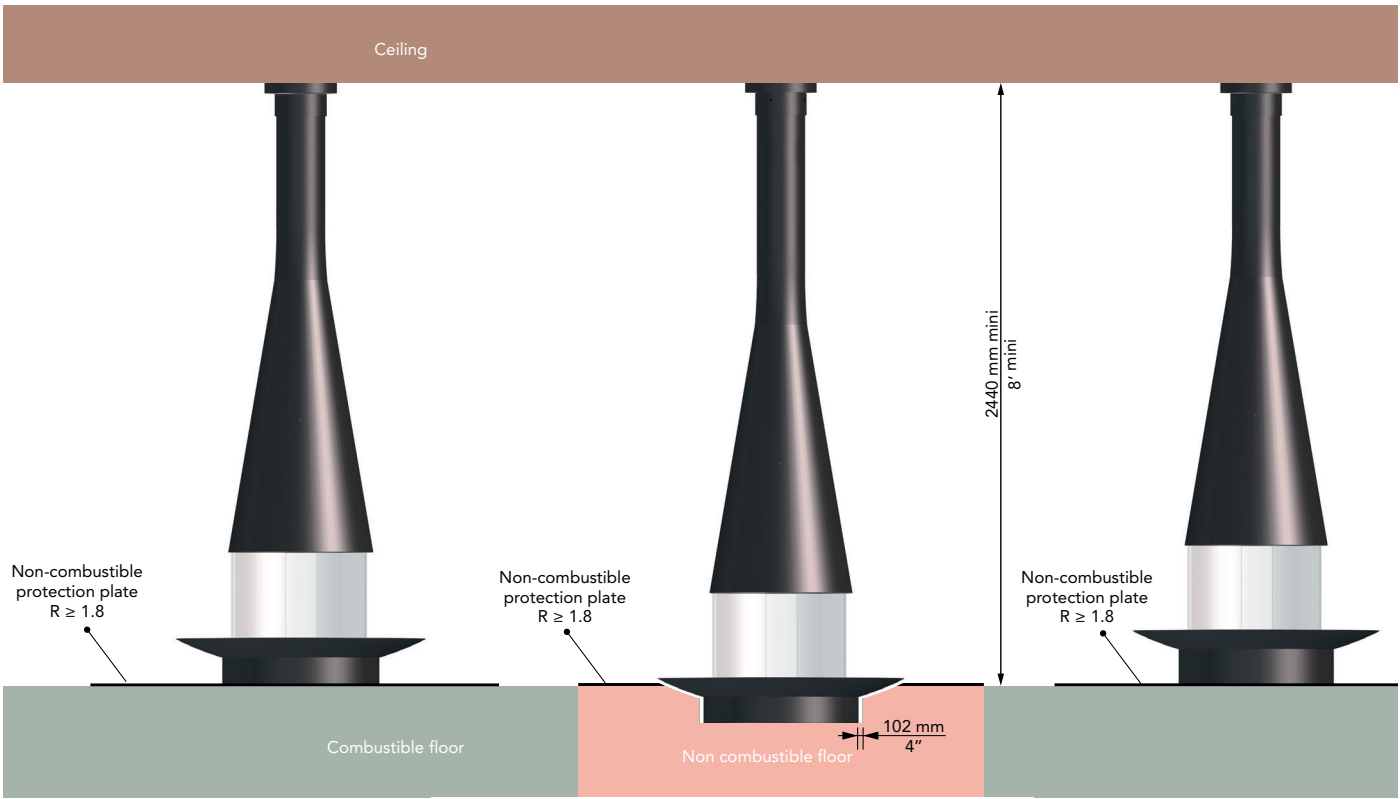


WARNING :

THIS FRESH AIR INLET DEVICE IS MANDATORY WHEN USING MECHANICAL VENTILATION SYSTEMS SUCH AS KITCHEN HOODS, PERMANENT AIR EXTRACTORS, OR ANY OTHER AIR CONDITIONING SYSTEM THAT CREATES A VACUUM IN THE HOME.

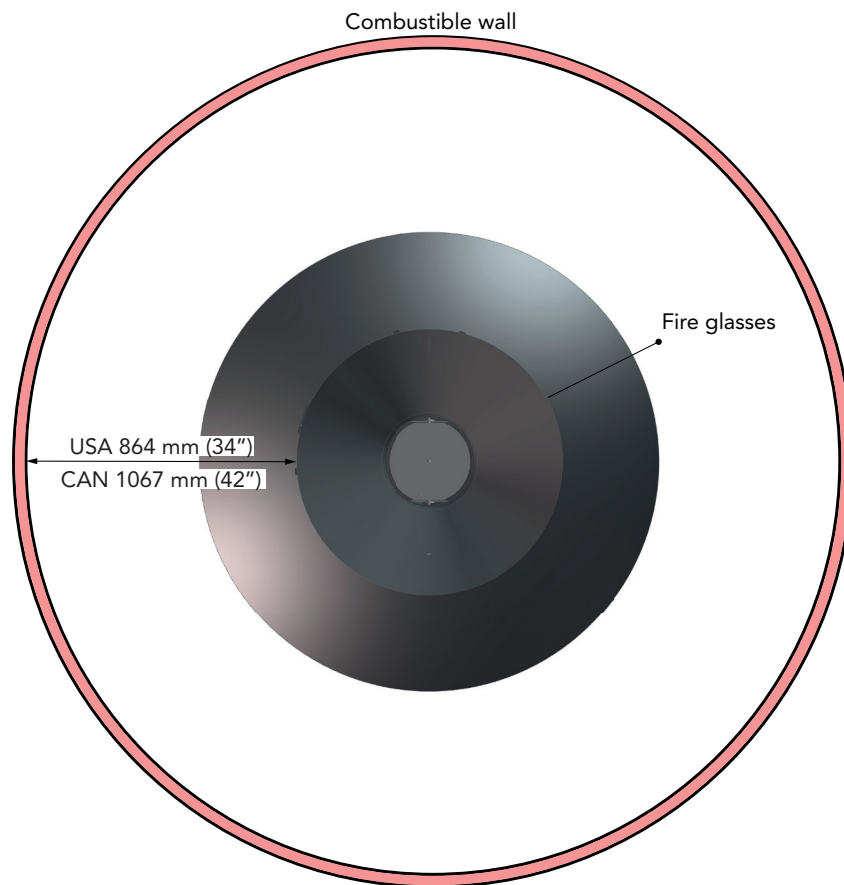
SPECIFICATIONS

■ FLOOR CLEARANCE REQUIREMENTS



SPECIFICATIONS

■ WALL CLEARANCE REQUIREMENTS



NOTE :

The clearance from the Focus steel flue is 1320 mm (52") for USA and 1524 (60") for CAN.

- When the fireplace is placed near a non-combustible wall, maintain a minimum clearance of 100 mm (4") for adequate ventilation. To prevent premature aging of painted walls, only use mineral or acrylic paints.
- The fire clearance to glass (from the edge of the fireplace) is 1000 mm (40").
- The fire clearance to a PVC window: refer to the technical specifications of the window.

⚠ WARNING :

FIRE CLEARANCES MAY ONLY BE REDUCED WITH THE APPROVAL OF THE RELEVANT AUTHORITIES.

SPECIFICATIONS

■ MATERIALS, PARTS, AND TOOLS INCLUDED FOR INSTALLATION

Supplied with Delivery :

- The hood.
- The base plate.
- Steel flue.
- Adjustable suspension plate or fixed suspension plate.
- 4 insulating washers (heat-loss prevention).
- The andiron.
- Focus kit (thermal protective glove, assembly gloves, touch-up spray paint, the cold handle, the cold handle (blanking cap) and this manual)
- 4 fire glasses (2 stationary and 2 sliding).

Optional :

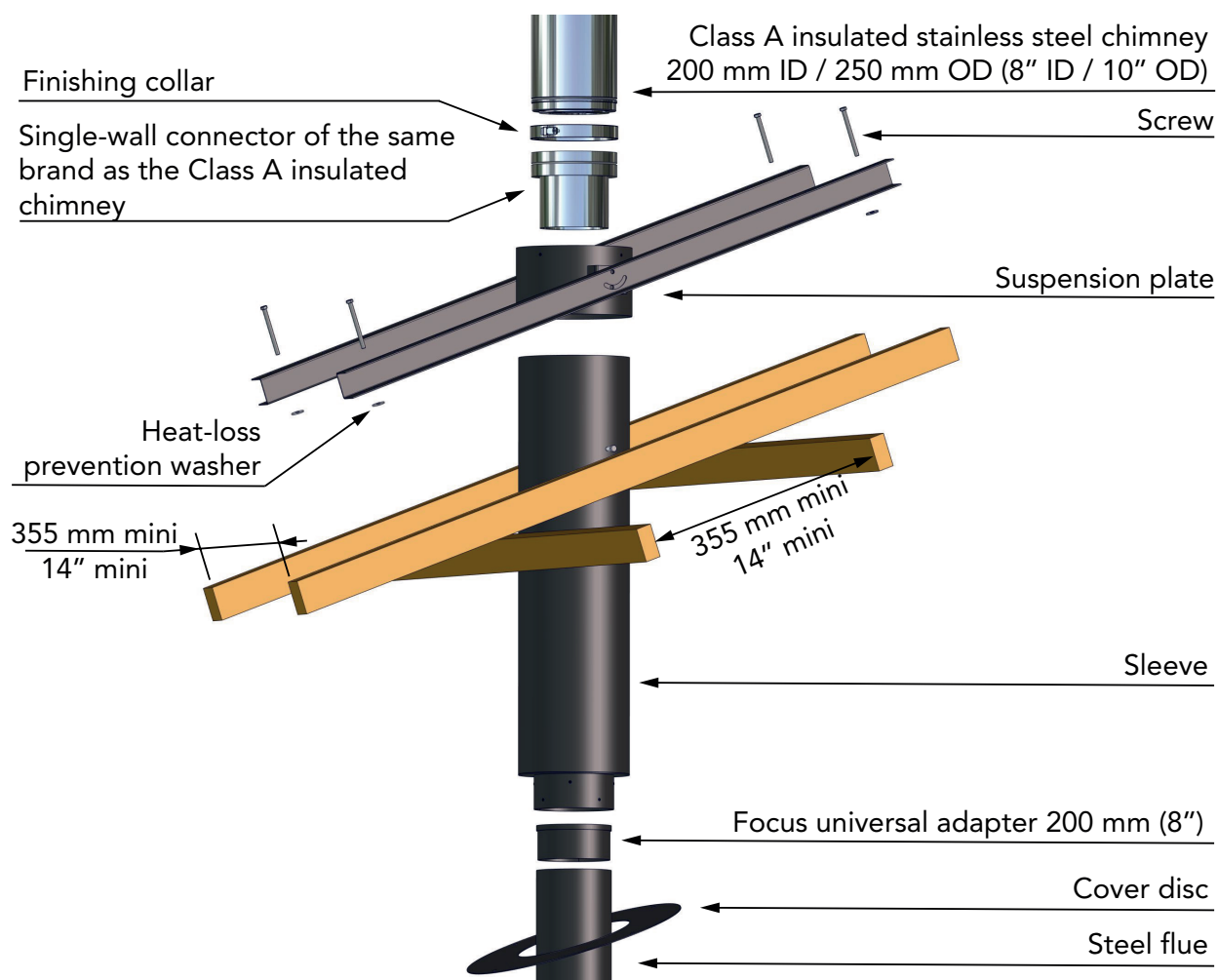
- Cover disc.
- Steel flue extension.
- Steel base.
- Custom roof outlet in stainless or lacquered steel with insulation and cap.

Minimum Tools Required for Installation :

- Drill.
- Allen keys (M4).
- Screwdriver set.
- Open-end wrench (M12).
- Scaffolding (depending on ceiling height).
- A minimum of two people is required.

INSTALLATION

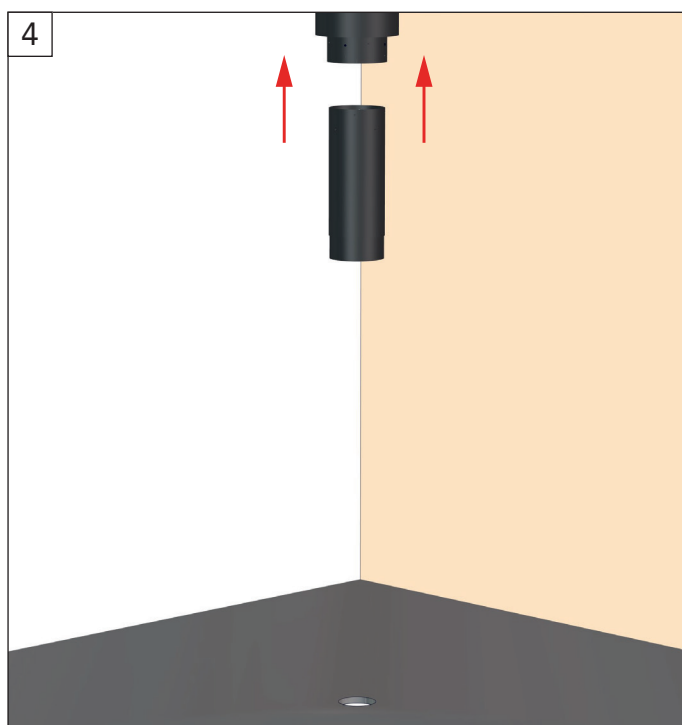
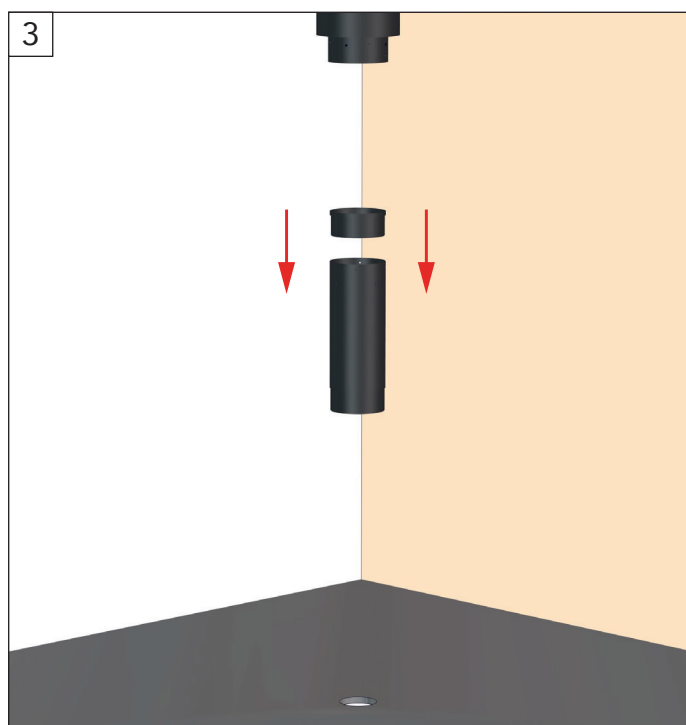
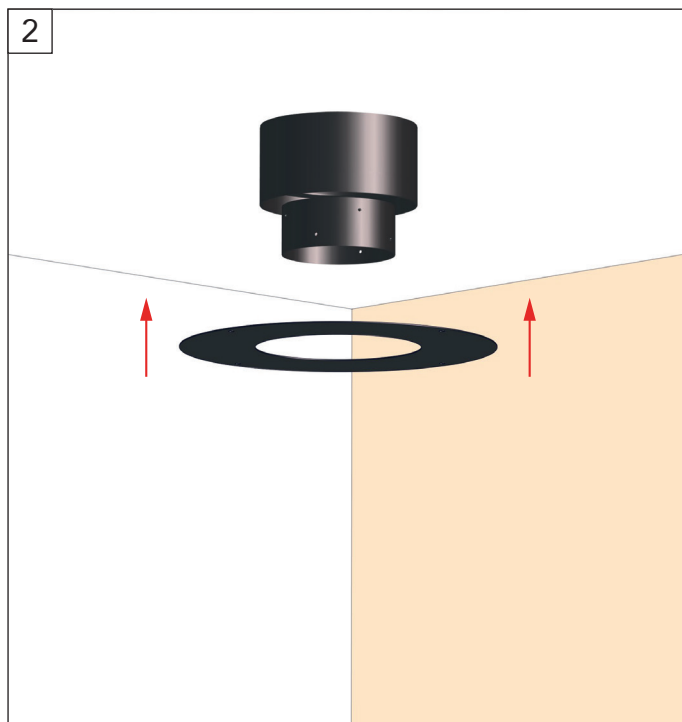
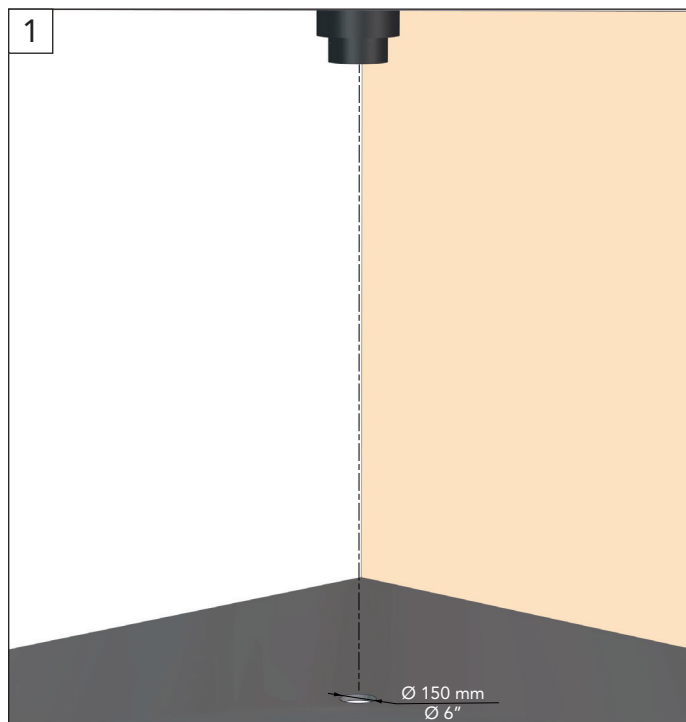
■ ASSEMBLY OF THE ADJUSTABLE SUSPENSION PLATE



Note : For more information, please refer to the appendix "Adjustable Suspension Plate".

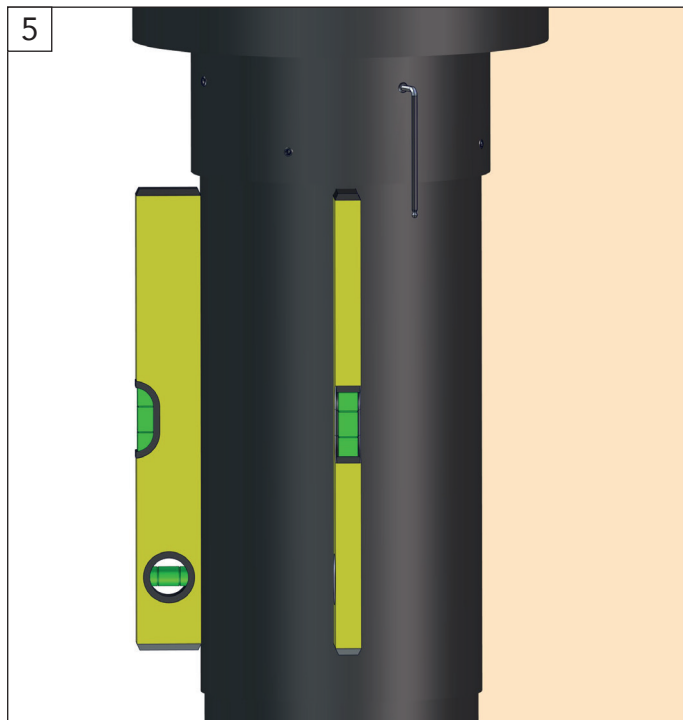
INSTALLATION

■ FIREPLACE INSTALLATION

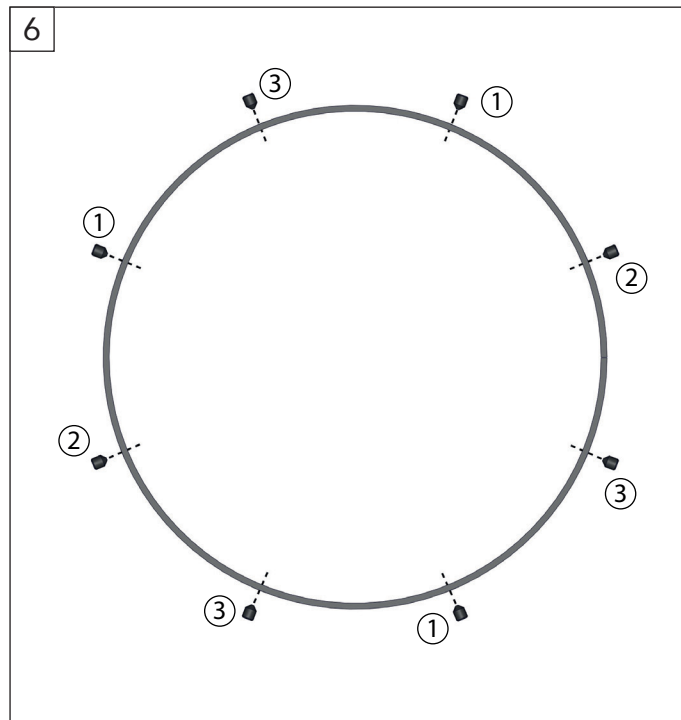


Put the 200 mm (8") Focus adapter to the end of the flue.

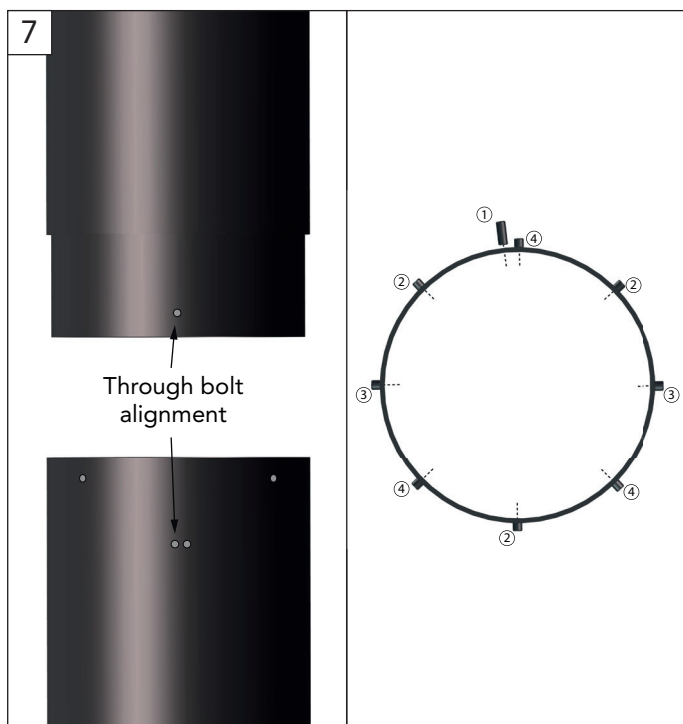
INSTALLATION



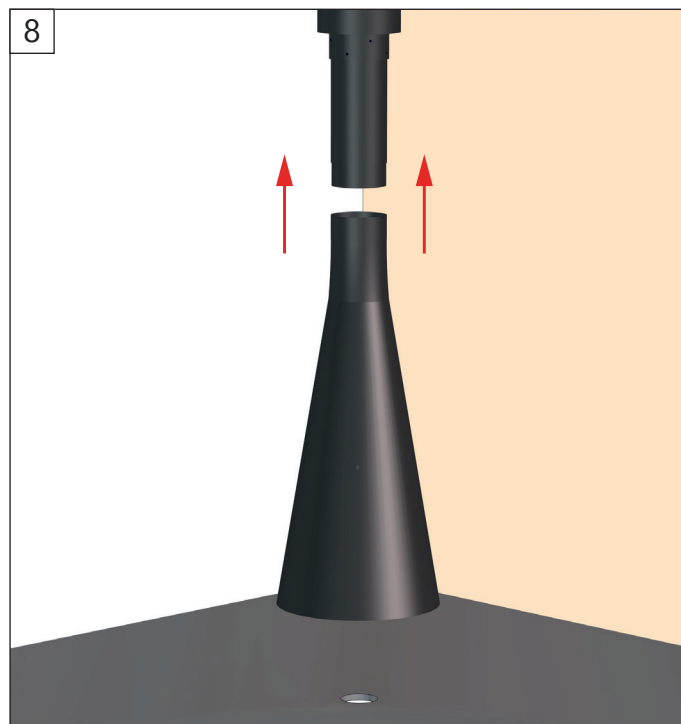
Level the flue.



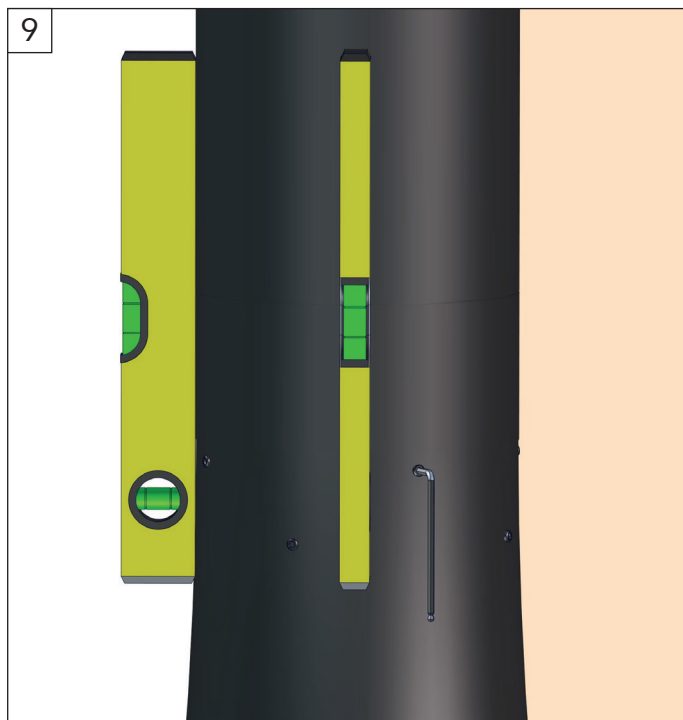
Tighten the pointed screws on the suspension plate.



If you have multiple flue sections, connect them to the first section using flat screws and the through-bolt, following the tightening sequence provided (including the hood).



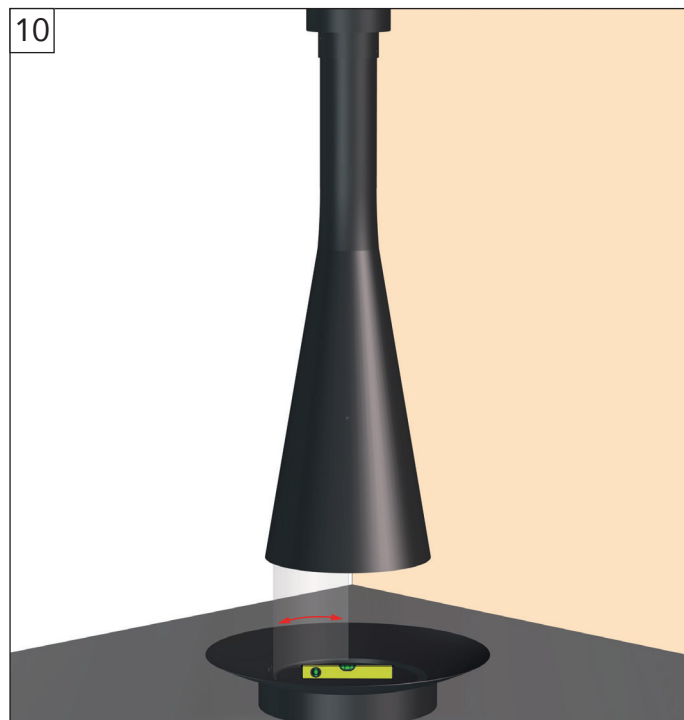
INSTALLATION



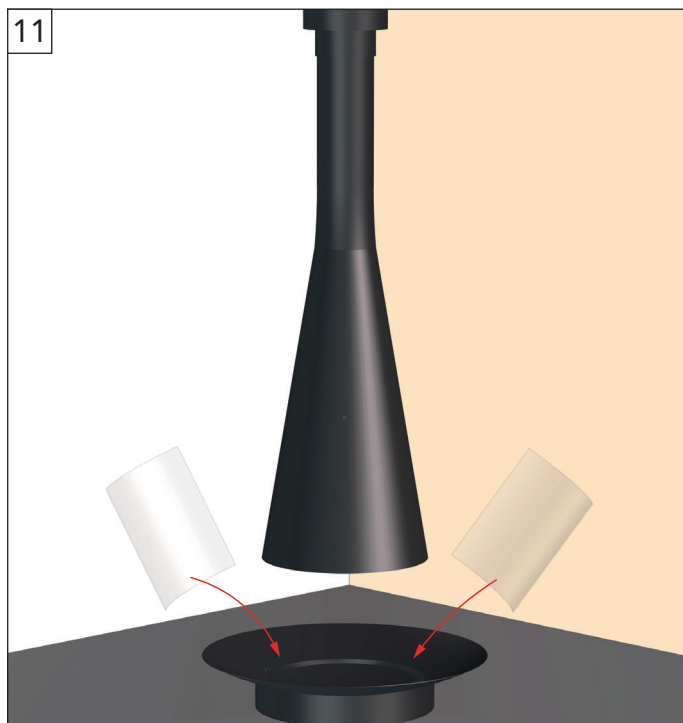
The tightening of the hood follows the same pattern as in inset 7.



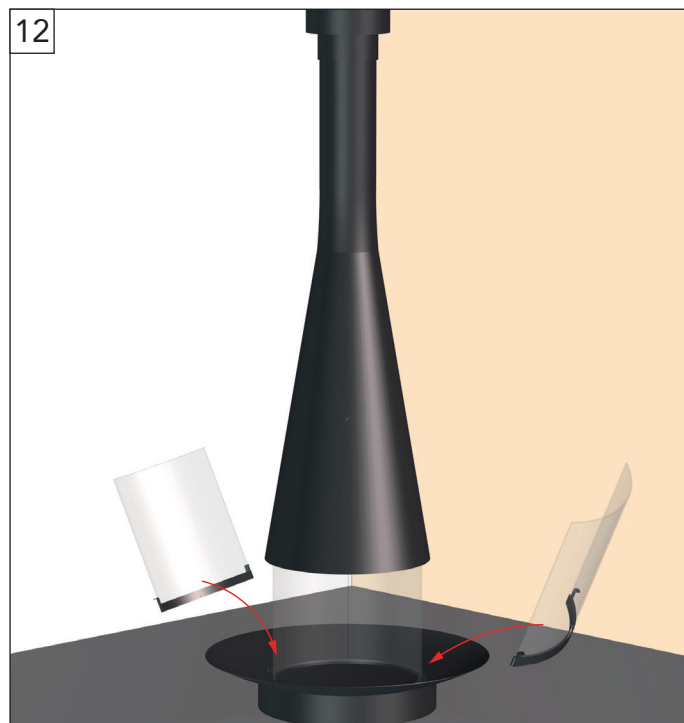
WARNING :
THE SCREWS ARE NOT FLUSH.



Position the fire bowl under the hood, check the level, and place a glass while rotating it 360° to confirm proper centering.



Place the two stationary glass panels on the inner rail.



Place the two sliding glass panels on the outer rail. Then put the andiron at the center.

USE

⚠ WARNING :

DURING OPERATION, THE FIREPLACE EMITS HEAT. SURFACES CAN BECOME VERY HOT. KEEP CHILDREN, VULNERABLE INDIVIDUALS, CURTAINS, PETS, AND OTHER ITEMS AT A SAFE DISTANCE. ANY CONTACT MAY RESULT IN SEVERE BURNS.

■ HANDLING FLAMMABLE PRODUCTS

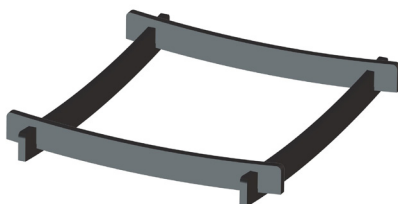
⚠ WARNING :

DO NOT USE CHEMICALS OR LIQUIDS TO LIGHT YOUR FIRE.

Do not use fuels such as lamp oil, various types of gasoline, kerosene, lighter fluid, or any other liquids to light or rekindle the fire. Ensure that these liquids are kept away from the fireplace.

■ ANDIRON

The andiron are located inside the fireplace and should only be removed during cleaning, once the ashes have completely cooled down. The fire is built on the andiron.



■ ASHES

Ashes must be placed in a metal container with a tight-fitting lid. The closed container should be placed on a non-combustible surface, away from any flammable materials, until disposal. If the ashes are to be buried or dispersed, they must remain in the closed container until they are completely cooled.

■ FUEL

⚠ WARNING :

DO NOT BURN TRASH OR FLAMMABLE LIQUIDS SUCH AS GASOLINE, NAPHTHA, OR MOTOR OIL. DO NOT STORE FIREWOOD IN THE FIRE CLEARANCE ZONE AROUND THE FIREPLACE.

Burn only natural, dry, log wood. The wood's moisture content should not exceed 20%. We recommend using dry wood that has been stored for 2 years. Use a covered shelter to store your wood.

USE

■ BEFORE YOUR FIRST FIRE

WARNING :

THE FILIOFOCUS HAS BEEN TESTED FOR USE WITH GLAZED PANELS FULLY CLOSED. IF DOOR IS OPEN OR LEFT PARTLY OPEN, GAS AND FLAME MAY BE DRAWN OUT OF THE FIREPLACE OPENING, CREATING RISKS FROM BOTH FIRE AND SMOKE. TO REDUCE THE RISK OF FIRE INJURY, DO NOT REMOVE GLAZED PANELS!

- Clean any dust accumulated during transport or installation using a damp sponge and/or a dry cloth.
- If you notice scratches on painted models, use only the Focus touch-up spray paint provided. If using the spray paint, ventilate the room before lighting your fire to disperse any fumes generated during the paint curing process.
- The first fire should be light. Do not use packing materials or pallet wood as fuel.
- The paint we use is thermoplastic, baked at 250°C (482°F) for 30 minutes. Due to the gradual curing of the components, the fireplace may emit slight smoke during the first fires. Painted surfaces near the fire may temporarily become slightly sticky or tacky when hot.

In such cases, we recommend:

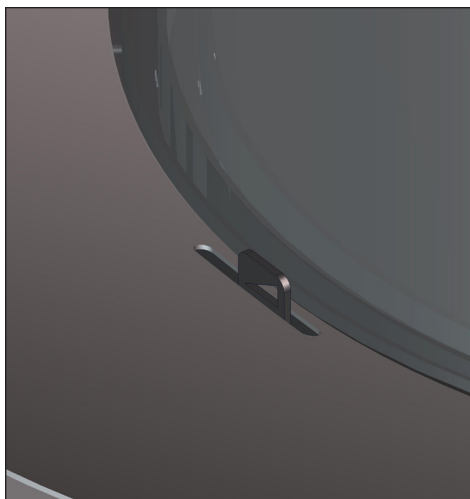
- Not to worry about any residual smoke or odors. This is normal during the first few fires and will quickly subside.
- Avoid touching, rubbing, or attempting to clean the fireplace while it is still hot. To prevent thermal shock, we strongly advise against pouring water on a vigorous fire to extinguish it.

■ LIGHTING AND MAINTAINING YOUR FIRE

WARNING :

**DO NOT OVERLOAD YOUR FOCUS FIREPLACE TO PREVENT OVERHEATING.
DO NOT USE YOUR FIREPLACE IF A GLASS PANEL IS DAMAGED OR BROKEN.**

To light the fire, we recommend using a small amount of fire starter along with sufficient kindling (small logs, branches, etc.) to create an initial light fire. The air intake adjustment mechanism on the fire bowl must be fully open (see illustration below).



USE

Once the light fire is burning steadily, add larger logs (between 3 and 7 depending on their size), ensuring not to smother the fire.

Leave some gaps between the logs to allow airflow. To maintain or sustain your fire, add logs as necessary (refer to the **NOTE** below).

NOTE : 3 kg of wood split into 10 small logs will burn more intensely (and faster) than 3 kg of wood split into 3 larger logs. However, both will ultimately produce the same amount of heat. The size of the logs you add determines the intensity and duration of the fire.

■ PROTECTIVE GLOVES

The use of the Focus protective gloves provided with our models is required when handling the damper, the spark guard, and other components.

■ OPERATION AND USE OF THE BLANKING CAP

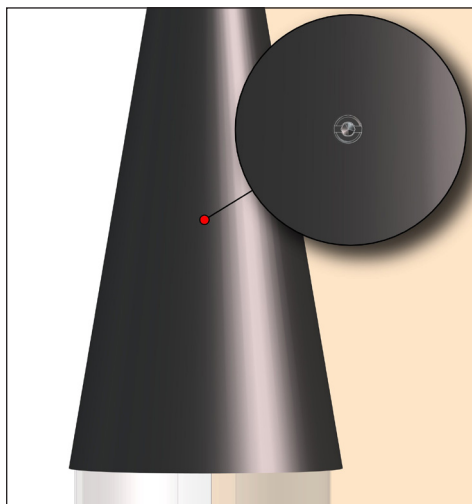
The use of the cold-hand tool or protective glove is mandatory when handling the damper to avoid any burns.

The Filiofocus blanking cap has 2 positions:

When the screw slot is vertical, the blanking cap is 0% closed.

When the screw slot is horizontal, the blanking cap is 100% closed.

To adjust the blanking cap position, use the tool provided with your fireplace and insert it into the screw located on the hood. During the operation of your appliance, the blanking cap must be in the vertical position.



MAINTENANCE

■ ASH REMOVAL



WARNING :

ENSURE THE FIRE IS EXTINGUISHED AND THE FIREPLACE SURFACES ARE COMPLETELY COOL BEFORE PROCEEDING WITH ASH REMOVAL.

To remove the ashes, we recommend using a shovel and a brush after removing the andirons. Place the ashes in an appropriate container (not supplied). After cleaning, make sure to properly reposition the andirons.

■ CREOSOTE FORMATION

When wood burns slowly, it produces tar and other organic vapors that combine with expelled moisture to form creosote. These creosote vapors condense in the relatively cool chimney of a slow-burning fire. As a result, creosote residues accumulate on the chimney walls. If ignited, this creosote produces an extremely hot fire.

Therefore, the chimney and chimney connector must be **inspected at least once every two months during the heating season** to determine if creosote has accumulated. If a significant layer of creosote (3 mm or more) has built up, it must be removed to reduce the risk of a chimney fire.

■ CHIMNEY SWEEPING

The Focus steel flue, stainless steel chimney, and single-wall connector must always be cleaned using a nylon brush. Never use a metal brush! Damage resulting from non-compliance with this instruction is not covered by the Focus warranty.



WARNING :

CHEMICAL CHIMNEY SWEEPING IS PROHIBITED. ONLY MECHANICAL SWEEPING IS ALLOWED.

■ FIRE GLASSES CLEANING

The exterior glass surfaces can be cleaned with a soft, dry cloth using a standard glass cleaner. Do not use abrasive products.

The interior glass surfaces must be cleaned regularly to prevent soot build-up. Use a commercially available stove glass cleaner.



WARNING :

DO NOT CLEAN THE GLASS WHEN HOT.

MAINTENANCE

■ SURFACE CLEANING

The exterior surfaces can be cleaned with a soft, dry cloth or a damp sponge (ensuring the fireplace is cool).

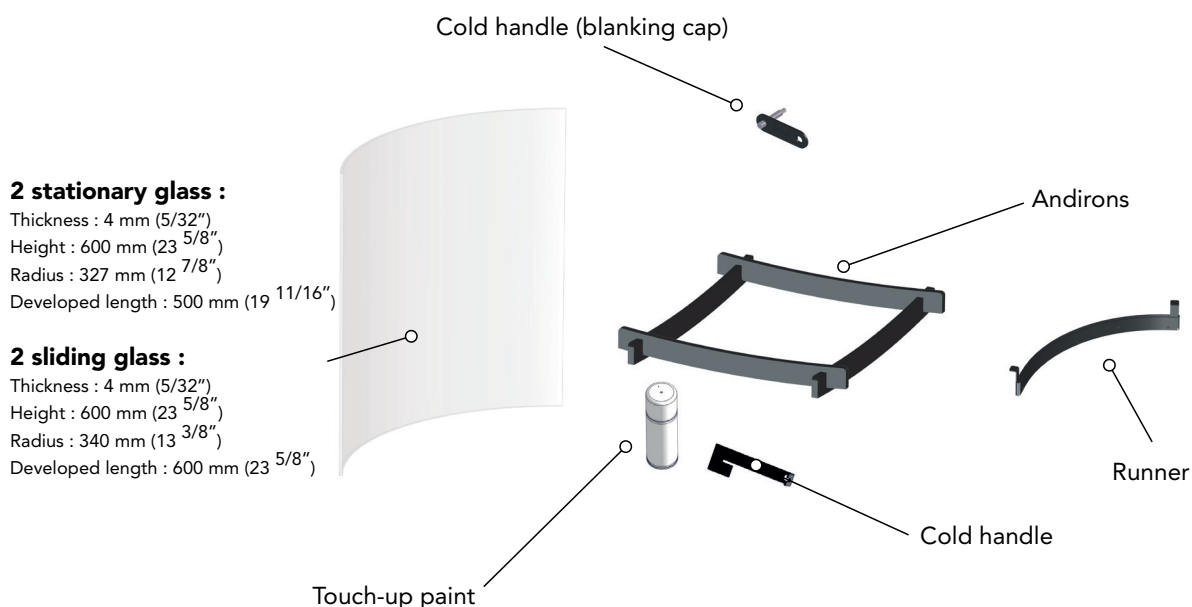


WARNING :

DO NOT SCRAPE THE PAINT.

■ SPARE PARTS

Note : In the event of a part replacement, use only parts recommended by Focus. Failure to comply with this note will automatically void the warranty.



To order these parts, contact :



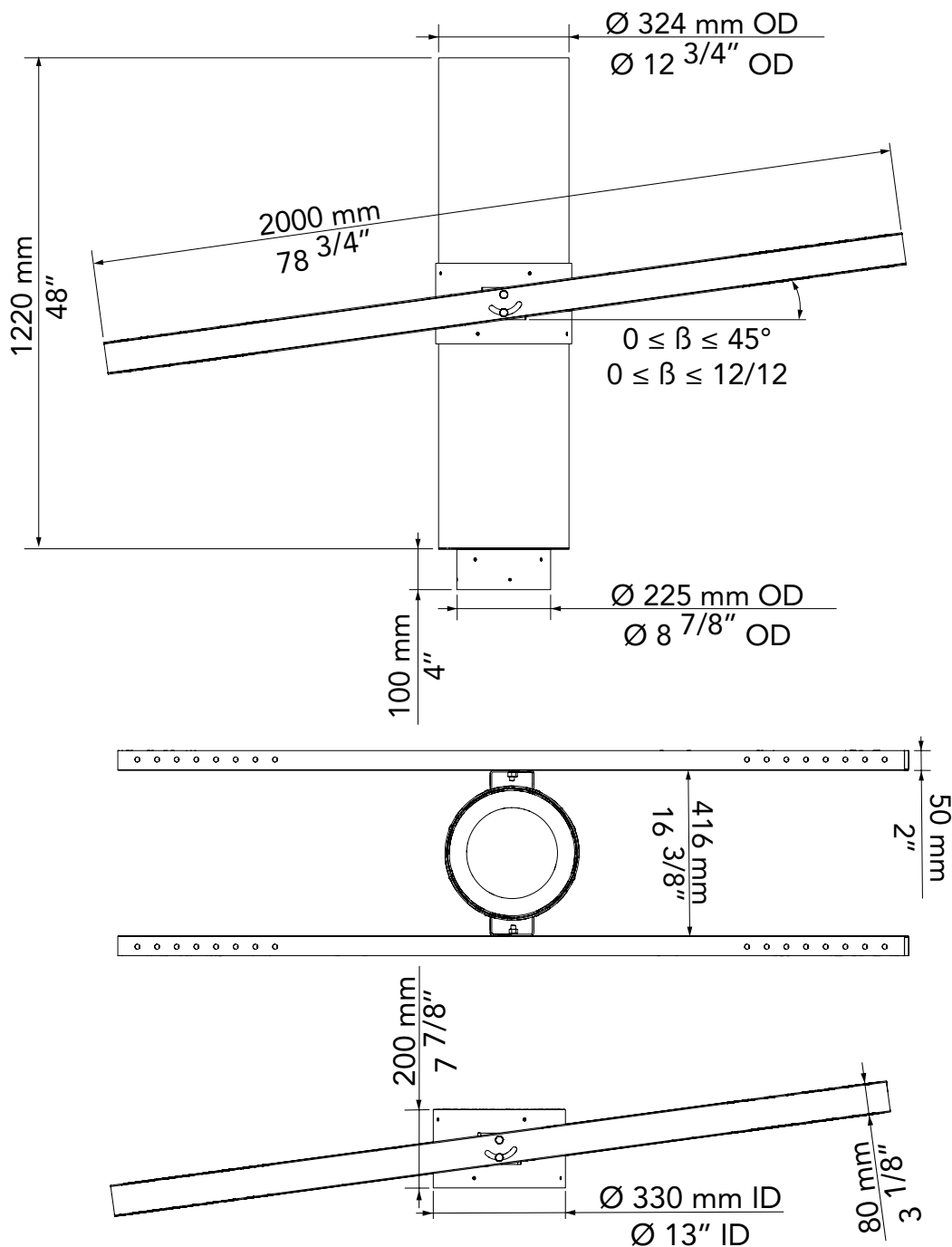
30 Log Bridge Road
Building 300 – Suite 303
Middleton, MA 01949
T: 781-324-8383
www.europeanhome.com

WARRANTY

All our Focus models are guaranteed against any defects in design, construction, and manufacturing, and are guaranteed to function properly for 5 years from the date of purchase. The warranty for our products is only applicable when our fireplaces have been installed in compliance with all local building regulations and with strict attention to the technical details described in our design plans, installation manuals, maintenance manuals, and user manuals. Our warranties exclude accidental damage, such as those occurring during transport without written notification upon receipt (reservations), damage caused during installation, and damage resulting from improper use. Exclusion of the warranty applies to the coating for appliances located less than 10 km from a saline environment.

APPENDIX

■ ADJUSTABLE SUSPENSION PLATE

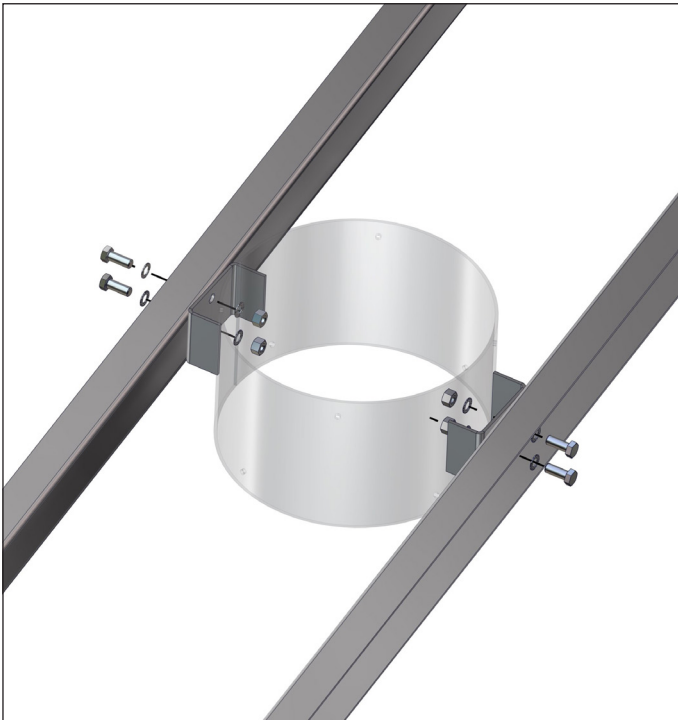


The components of the suspension plate are :

- 2 mounting bars (U-profile).
- 1 support collar (4 bolts, 4 nuts, 8 washers).
- 1 sleeve.
- 8 pointed screws (M8X10).

Note : Maintain a 50 mm (2") air gap around the connection to the flue pipe. The mounting bars can be adjusted on-site if needed. Ensure they are securely fixed to the structure to support the weight of the fireplace and the chimney.

APPENDIX



1. Assemble the Support Collar:

- Position the support collar between the mounting bars.
- Secure the bolts firmly using the provided nuts and washers.

2. Mount the Assembly:

- Attach the assembled unit to the ceiling or roof at the designated location.
- Ensure the attachment is firm and secure.

3. Insert the Sleeve:

- From below, place the sleeve into the support collar.
- Ensure the sleeve is inserted and positioned securely.

4. Adjust the Sleeve Length:

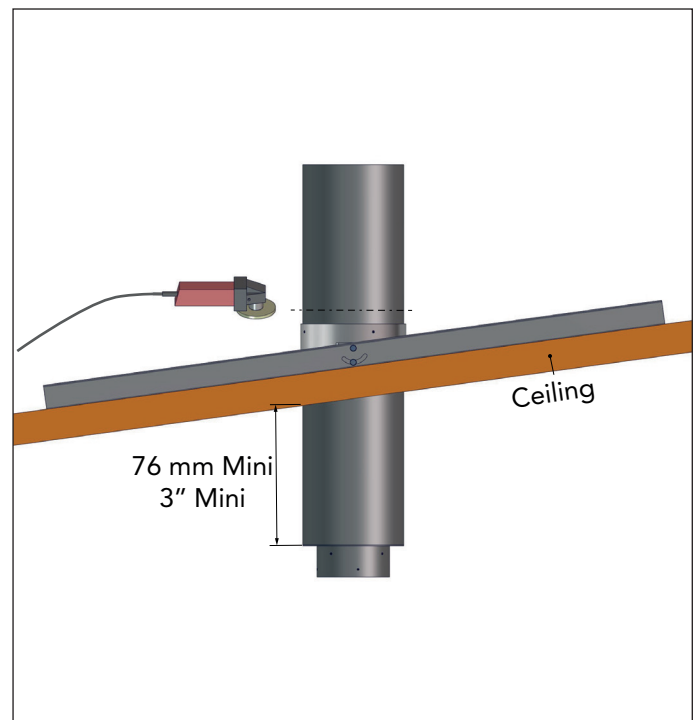
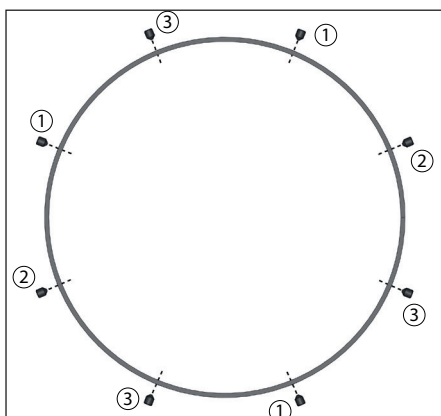
- Adjust the length of the sleeve to the desired size.
- Ensure that the widest part of the sleeve is positioned at a minimum of 76 mm (3") below the ceiling finish.

5. Mark and Prepare for Cutting:

- If the sleeve needs to be cut, mark it above the support collar using a pencil.
- Remove the sleeve from the support collar and apply tape around the pencil marks to use as a cutting guide.

6. Cut the Sleeve with an Angle Grinder:

- Use an angle grinder to cut the sleeve along the taped guide.



7. Reinstall the Sleeve in the Support Collar:

- Place the sleeve back into the support collar.
- Using a level, confirm proper alignment and securely tighten the set screws according to the diagram.



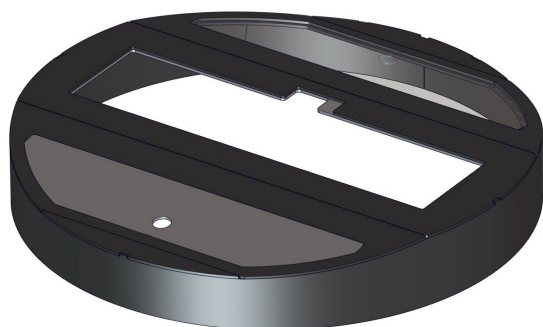
WARNING :

THE SCREWS ARE NOT FLUSH.

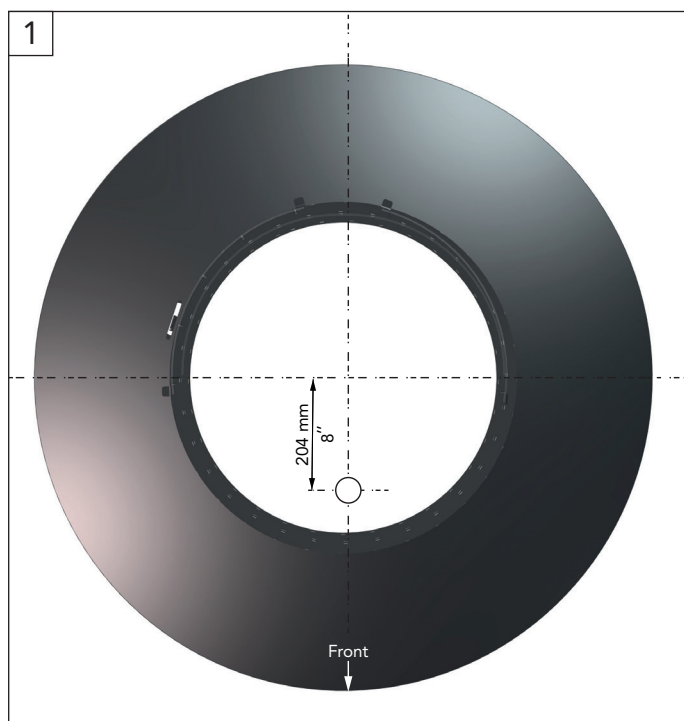
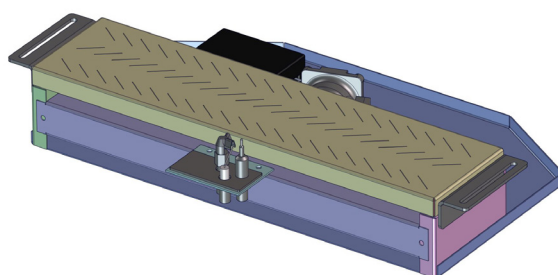
APPENDIX

■ GAS ADAPTATION

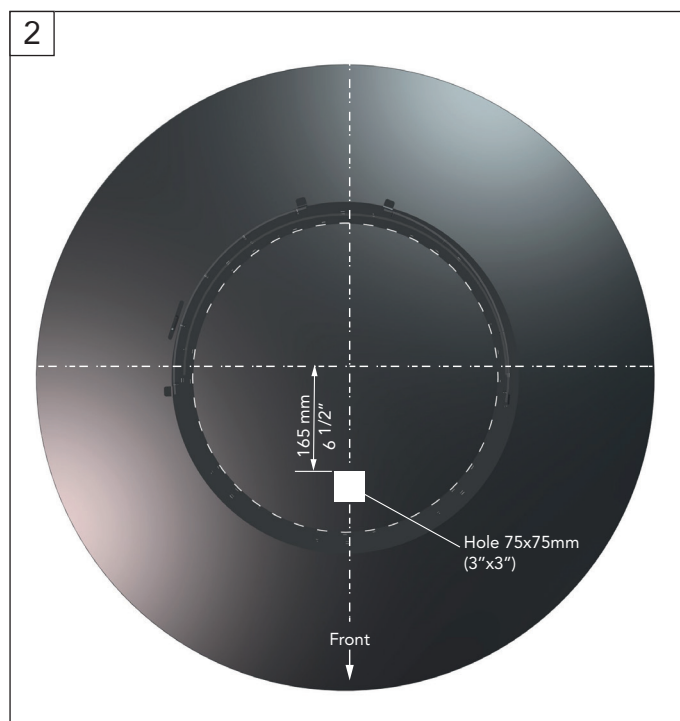
BURNER COVER



BURNER



Position of the gas supply line.



Drill a hole in the basin.

Then follow the steps on page 13 of the manual: "European Home Gas Stones Natural Vent Manual."



CREATE BEYOND CONVENTION

Focus – Atelier Dominique Imbert
3 impasse Claque Patin, Viols le fort, France
www.focus-creation.com
info@focus-creation.com